

G304G



密封型超小型微动开关

■特点/Features

- ◆防水防尘 (IP67) 设计
- ◆体型小巧, 紧凑
- ◆长寿命, 高可靠性
- ◆配备各种形式的操作柄
- ◆接线端子种类齐全
- ◆广泛应用于汽车控制、家电控制、工业控制等领域
- ◆多种安装外形尺寸满足不同的安装要求
- ◆滑动夹子式结构
- ◆非短路式切换

- Designed For Water and Dust Tight (IP67)
- Small Compact Size
- Long Life and High Reliability
- Variety of Levers
- Wide Range of Wiring Terminals
- Widely used in Automotive Electronics, Appliance and Industrial Control etc.
- Customized Designs
- Slide Structure
- Non Short Circuit Conversion

■应用/Application

- ◆汽车/Car
- ◆空调/Air-Comditioner
- ◆通信/Communication
- ◆电动牙刷/Electric Tooth Brush
- ◆玩具/Toys

■特性参数/Parameters

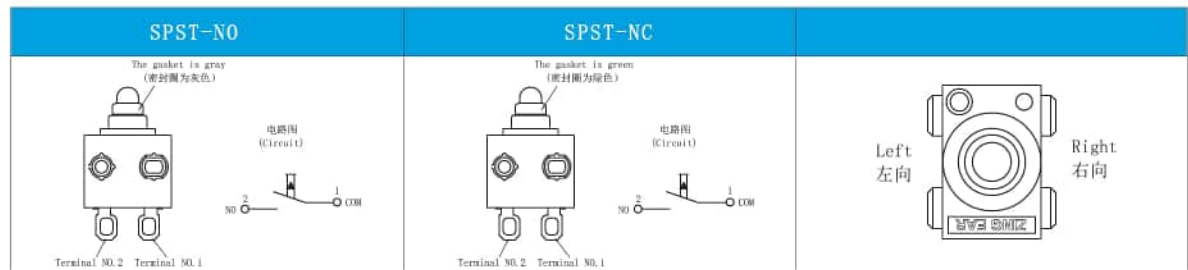
容许线性操作速度/	1~500mm/s	
容许操作频率/Operating Frequency	120次/min	
绝缘电阻/Insutation Resistance	≥100MΩ (DC 500V 绝缘电阻计)	
接触电阻 (初始值)	端子型/with terminals type	≤100mΩ
	导线型/with wire type	≤500mΩ (300mm线长)
耐电压	同极端子间/Between terminals	AC500V, 50/60HZ, 1min.
	各端子与非带电金属件之间 Between terminals and uncharged metal parts	AC1000V, 50/60HZ, 1min.
振动	误动作/No transformation action	10-55HZ 双倍振幅1.5mm
寿命/Service Life	电气/Electrical	300000次/cycles (20次/min) DC12V 0.1A DC3V 50μA
	机械/Mechanical	300,000次/cycles (30次/min)
保护结构/Protection Level	IEC IP67 (端子部分除外)	
使用环境温度/Storage Temperature	-40~+85°C 60%RH 以下(无结冰、无凝露)	
使用环境湿度/Storage Humidity	95%RH以下(+5~+35°C)	

G304G型系列微动开关订货型号指引
G304 G-Type Series Micro Switch Ordering Instruction

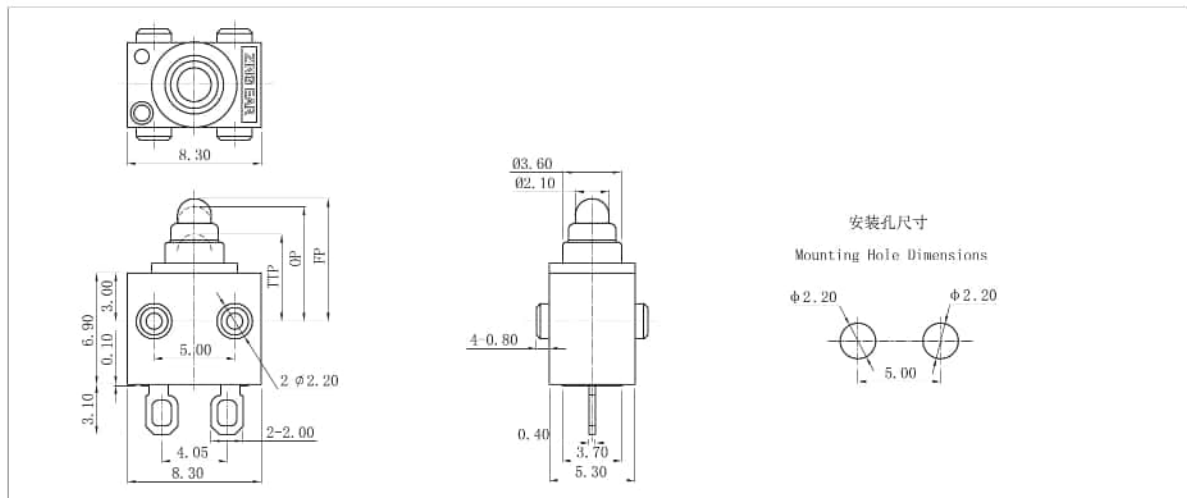
G3	04G	150	U	00	E	39	Points Dimension	G	A	280	Special Designator
Switch Type 开关类别	Electrical Rating 额定负载	Ordering Form as Designator 订货型号	Terminal Style 端子类型	Lever Type 操作类型	Circuit Code 电路形式	Shape and Points 外形与定位柱	Points Dimension 定位柱尺寸	MP Type (for reference only) (仅供参考)	MP Number Code (特殊订货号)	Wire Length 线长	Special Designator 特殊设计代码
G3 Series - Micro Switch 微动开关	04 0.1A/200V 0.05A/300V	80 80G/Max.	U Straight PCB Terminals with Left, Angled PCB Terminals with two pins 直左右PCB 端子 G型左侧PCB端子	00 No lever 不带操作柄 柱式接点	E Slide Type SFST-NO 1.2英寸式常开	39 G-type point G型定位柱	F Standard 定位柱 2.46mm/5.0mm	No lead 不带引线	No lead 不带引线	300mm length standard lead 标准线长	S Special lead 特殊说明
	...	150 Other/其他	V Solder Terminals with 7-pin terminals 焊锡端子 7针接端子	...	F Slide Type SFST-NC 1.2英寸式常闭	40 G-type left point G型左定位柱	G 02.0x1.5mm point, 02.0x1.5mm 定位柱	A UL1007	A UL1007	280 280mm length 280mm 长	B Welded lead wires on left side 焊锡引线 左侧出线
...	Other 其他	...	M Short Solder Terminals with 2-pin terminals 短焊锡端子 2针接端子	...	Other 其他	41 G-type right point G型右定位柱	H 02.0x2.0mm point, 02.0x2.0mm 定位柱	C UL1430	C UL1430	Other 其他	C Welded lead wires on right side 焊锡引线 右侧出线
...	Other 其他	P Straight PCB Terminals 直PCB端子	P Straight PCB Terminals 直PCB端子	42 G-type two point G型双定位柱	I 02.0x0.8mm point, 02.0x0.8mm 定位柱	D UL1061	D UL1061	...	E Welded lead wires on bottom 焊锡引线 底部出线
...	Other 其他	S Short Solder Terminals with hole 焊锡端子 带孔	S Short Solder Terminals with hole 焊锡端子 带孔	43 G-type point G型定位柱	K 7.3x1.2x1.2mm point, 7.3x1.2x1.2mm 定位柱	B UL1330	B UL1330	...	Other 其他
...	Other 其他	44 G-type point G型定位柱	Other 其他	J AVSS	J AVSS
...	Other 其他	48 G-type point G型定位柱	...	H UL1332	H UL1332
...	Other 其他	Other 其他	...	K UL1332	G UL1332
...	Other 其他	L Other 其他	Other 其他
...	Other 其他	Other 其他

■ 电路图/Circuit

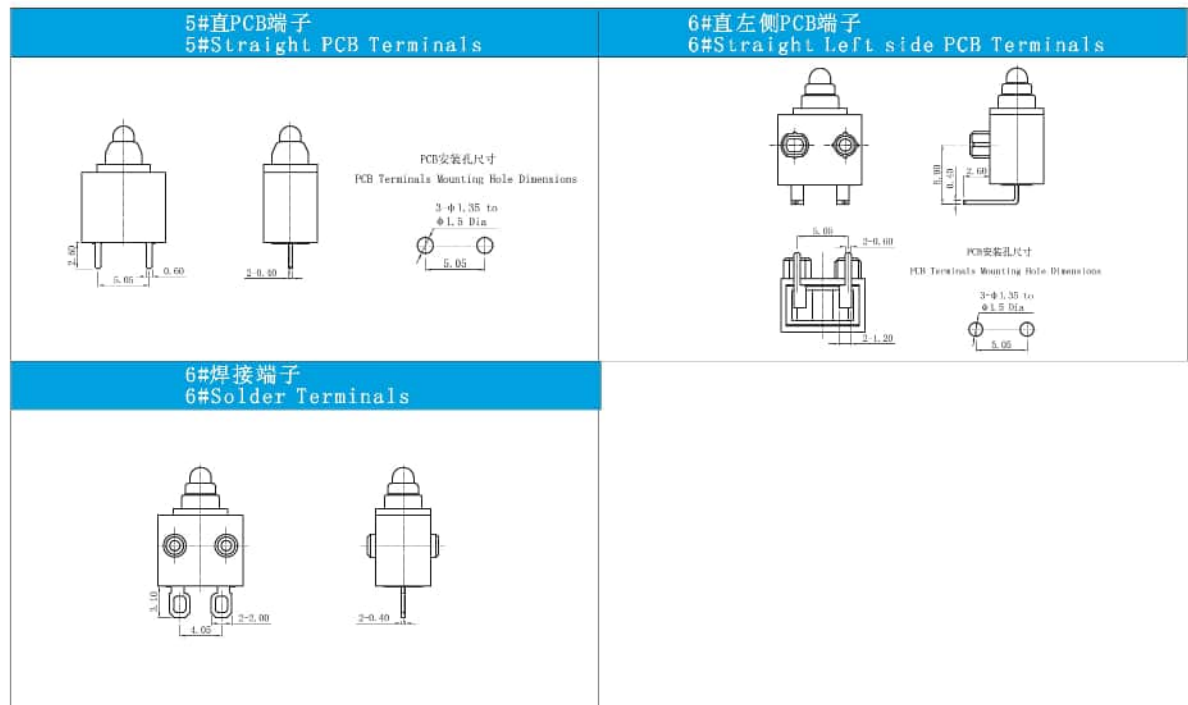
■ 定位柱方向识别/Post direction define



■ 基本型安装尺寸及操作特性图/Basic Mounting Dimensions and Operating Characteristics



■ 开关端子类型 (可定制) /Switch Terminal Type (can be customized)

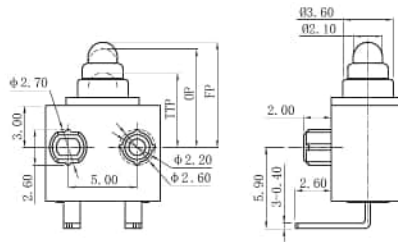


■ 开关定位柱类型及尺寸/Posts Type

标准型: $\phi 2.60\text{mm} \times 5.0\text{mm}$ 左向定位柱 Standard Type: $\phi 2.60\text{mm} \times 5.0\text{mm}$ left posts	H型: $\phi 2.60\text{mm} \times 2.0\text{mm}$ 左向定位柱 H Type: $\phi 2.60\text{mm} \times 2.0\text{mm}$ left posts	G型: $\phi 2.60\text{mm} \times 1.5\text{mm}$ 左向反定位柱 G Type: $\phi 2.60\text{mm} \times 1.5\text{mm}$ reverse left posts
I型: $\phi 2.20\text{mm} \times 0.8\text{mm}$ 双侧定位柱 I Type: $\phi 2.20\text{mm} \times 0.8\text{mm}$ two sides posts	G型矩形定位柱 G Type rectangle one side posts	无定位柱 no posts

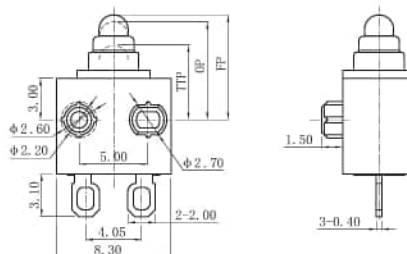
■ 外形尺寸和操作特性/Dimenstions ang Operating Characteristics

◆ G304-150U00E40H



OF Max. (gf)	TTP Max. (mm)	FP Max. (mm)	OP (mm)
150	5.3	7.9	7.1±0.5

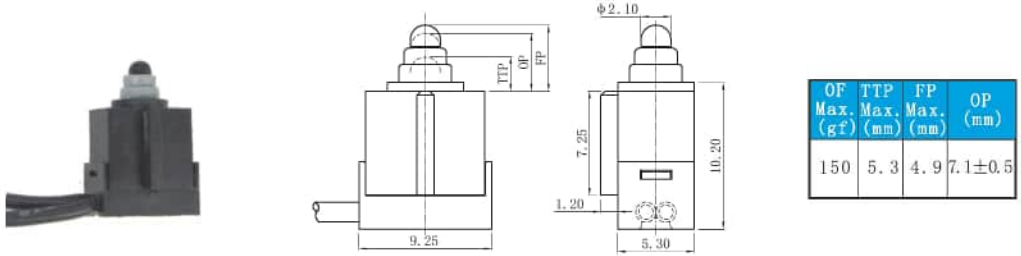
◆ G304-150V00F44G



OF Max. (gf)	TTP Max. (mm)	FP Max. (mm)	OP (mm)
150	5.3	7.9	7.1±0.5

■ 外形尺寸和操作特性/Dimensions and Operating Characteristics

◆ G304-150M00E48-□□□□□B



◆ G304-150M00E40H-□□□□□C

