

G606



基本型双断微动开关
DPDT Micro Switch 1NO+1NC

■ 特点/Features

- ◆ 体型小巧，结构紧凑
- ◆ 长寿命，高可靠性
- ◆ 端子种类齐全
- ◆ 双断型转换机构
- ◆ 广泛应用于工业控制等领域

- Contact Size and Tight Configuration
- Long Lif, High Reliability
- Variety Double-Break Type
- DPDT Double-Break Type
- Wideiy used in Industry Control, etc.

■ 应用/Application

- ◆ 浮筒
- ◆ 排污泵

Float
Sewage Pump

■ 特性参数/Parameters:

额定值Rating	06	0.5A 125/250VDC 0.5A/6A 125/250VAC, 1/4HP 250VAC
操作频率Operating Frequency	电气/Electrical 机械/Mechanical	10~30次/分 cycles/minute 120次/分 cycles /minute
触点电阻 (初始值) /Contact ResistanceInitiative)		最大30~100mΩ(取决于类型) /30~100mΩMax (Depends on P/Ns)
绝缘电阻/Insulation Resisttance		在500VDC时, 100MΩMin./100MΩMin(at 500VDC)
抗电强度/Dielectric Strength		AC 750V RMS (50-60Hz)
保存温度/Storage Temperature		-40° C~+125° C
保存湿度/Storage Humidity		85%RH Max
寿命/Service Life	电气/Electrical 机械/Mechanical	50, 000~100, 000次/Cycles(取决于类型/Depends on P/Ns) 500, 000次
单重/Unit Weight		约1.96g(焊接型端子无手柄类型) Approx, 110g (solder terminals, without lever)

■ 接触形式图/Circuit Configuration



■ 安装孔尺寸/Mounting Hole Dimensions

(单位/Unit:mm)

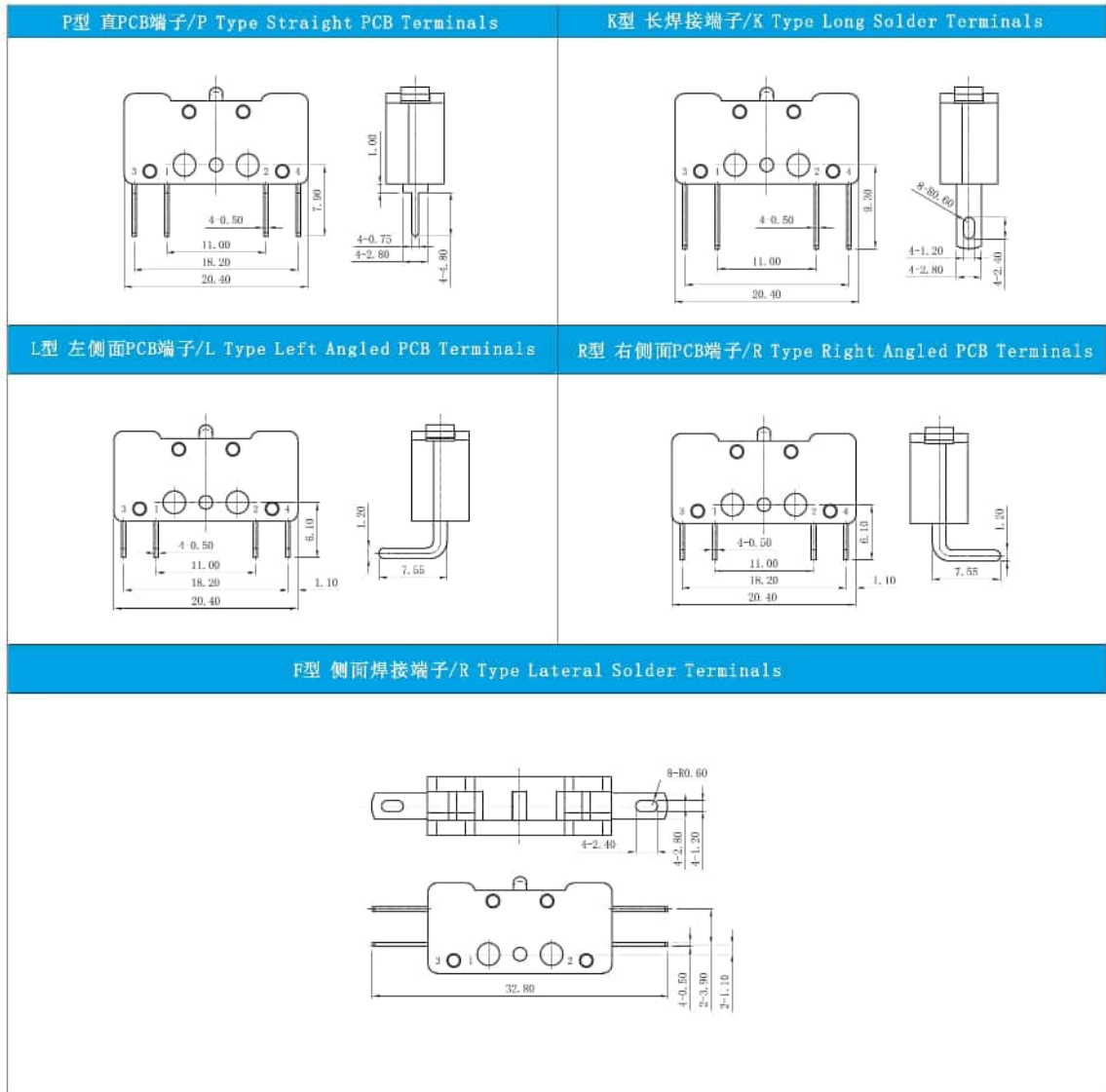
安装孔尺寸Mounting Hole Dimensions	底面PCB端子安装孔尺寸 Mounting Hole Dimension of PCB at bottom	侧面PCB端子安装孔尺寸 Mounting Hole Dimension of Angled PCB terminal

G606系列微动开关订货型号指引 G606 Series Micro Switch Ordering Instruction

66	06	200	K	00	D	K	XX
开关类别 Switch Type	额定负载 Electrical Rating	操作力(最大值) Operating Force at pin Plunger, Max	端子类型 Terminal Style	操作柄类型 Lever Type	电路形式 Circuit Code	特别设计代码 Special Designator	特别设计代码 Special Designator
G6 系列 微动开关 G6 series micro switch	UL/CUL: 0.5A 125/250VDC 0.5A/6A 125/250VAC 1/4HP 250VAC 5E4 μ 40T125	50gf 0.49N (仅适用于 0.1A 电流 /Only for 0.1A rating) 05用于无自复 位功能, 需带手柄操作 no automatic reset function, should be acted by lever)	K 长焊端子 Long solder Terminal	00 不带操作柄 柱式按钮 Pin Plunger	D DPDT 双断点- INO/INC	通用型 General	此为特别指定代码, 当端子类型是 "T" 或操作力类型是 "F" 时说明此端子或操作力是特别设计的, 具体请参考产品规格来确定详细的差别 A special designator letter is used only when Terminal Type is "T" or Operating Force is "F" to specify that the terminals or Operating Force is special. Review Product Specification to determine
		200gf 1.96N (适用于自动复位位置 Only for automatic reset function)	P 直PCB 端子 Straight PCB Terminal	11 直柄 Straight lever	E DPDT-NO 双断点-常开		
		F 特殊操作力 Special Connect	F 侧面焊端子 side solder terminal	12 直柄 (尾饰有孔) Straight lever (with hole)			
			R 右侧面 PCB 端子 Right side PCB Terminal	13 短直柄 Short Straight lever			
			L 左侧面 PCB 端子 Left side PCB Connect	16 短直柄 Short Straight lever			
							其他 Other

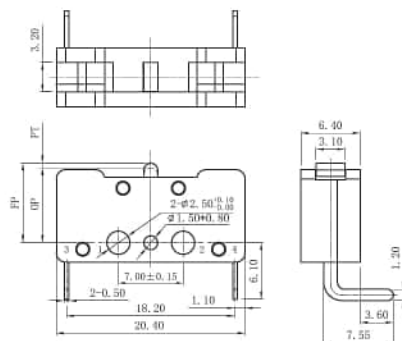
■ 端子类型 Terminal Type

◆ 端子厚度为0.5mm/Thickness of Terminals:0.5mm



■ 外形尺寸和操作特性/Dimensions and Operating Characteristics

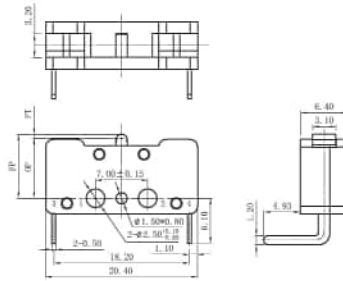
◆ G606-200R00E



OF Max (gf)	RF Min (gf)	PT Max (mm)	OT Min (mm)	MD Max (mm)	FP Max (mm)	OP (mm)
200	40	1.5	0.25	0.45	9.5	7.7±0.3

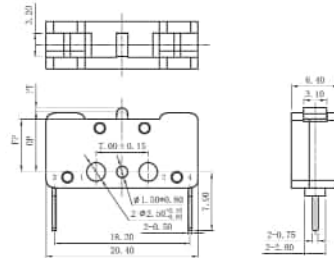
■外形尺寸和操作特性/Dimensions and Operation Characteristics

◆G606-200L00E



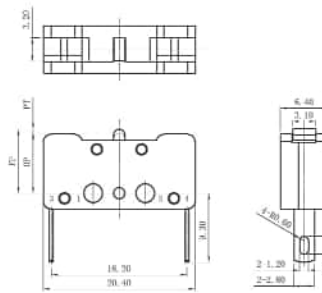
OP Max (gf)	RF Min (gf)	PT Max (mm)	OT Min (mm)	MD Max (mm)	FP Max (mm)	OP (mm)
200	40	1.5	0.25	0.45	9.5	7.7±0.3

◆G606-200P00E



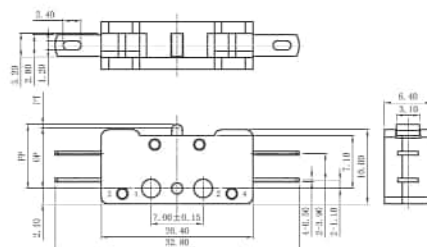
OP Max (gf)	RF Min (gf)	PT Max (mm)	OT Min (mm)	MD Max (mm)	FP Max (mm)	OP (mm)
200	40	1.5	0.25	0.45	9.5	7.7±0.3

◆G606-200K00E



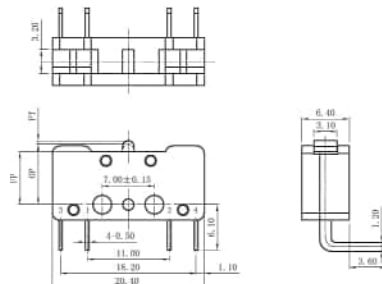
OP Max (gf)	RF Min (gf)	PT Max (mm)	OT Min (mm)	MD Max (mm)	FP Max (mm)	OP (mm)
200	40	1.5	0.25	0.45	9.5	7.7±0.3

◆G606-200F00D



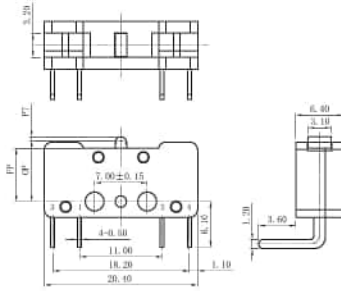
OP Max (gf)	RF Min (gf)	PT Max (mm)	OT Min (mm)	MD Max (mm)	FP Max (mm)	OP (mm)
200	40	1.5	0.25	0.45	9.5	7.7±0.3

◆G606-200R00D



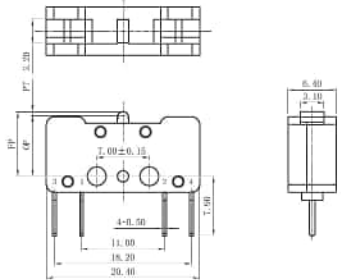
OP Max (gf)	RF Min (gf)	PT Max (mm)	OT Min (mm)	MD Max (mm)	FP Max (mm)	OP (mm)
200	40	1.5	0.25	0.45	9.5	7.7±

◆G606-200L00D



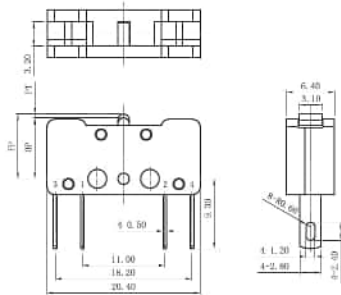
OP Max (gf)	RF Min (gf)	PT Max (mm)	OT Min (mm)	MD Max (mm)	FP Max (mm)	OP (mm)
200	40	1.5	0.25	0.45	9.5	7.7±0.3

◆G606-200P00D



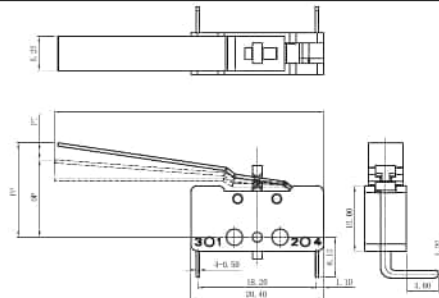
OP Max (gf)	RF Min (gf)	PT Max (mm)	OT Min (mm)	MD Max (mm)	FP Max (mm)	OP (mm)
200	40	1.5	0.25	0.45	9.5	7.7±0.3

◆G606-200K00D



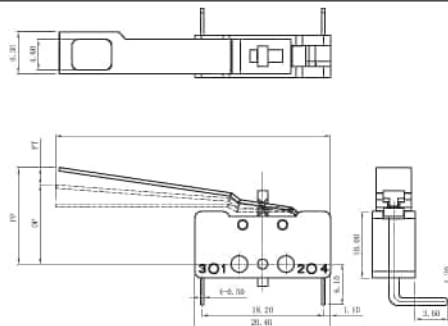
OP Max (gf)	RF Min (gf)	PT Max (mm)	OT Min (mm)	MD Max (mm)	FP Max (mm)	OP (mm)
200	40	1.5	0.25	0.45	9.5	7.7±0.3

◆G606-200R11EK



正向操作力 Positive direction operating force	12gf MAX
反向操作力 Negative direction operating force	12gf MAX
正向行程 Positive direction travel	8.0mm MAX
反向行程 Negative direction travel	8.6mm MAX
正向自由位置 Positive direction free position	19.0mm MAX
反向自由位置 Negative direction free position	9.5mm MAX
正向动作位置 Positive direction operating posi	12.05±1.5mm
反向动作位置 Negative direction operating posi	15.5±1.0mm

◆G606-200R12EK



正向操作力 Positive direction operating force	12gf MAX
反向操作力 Negative direction operating force	12gf MAX
正向行程 Positive direction travel	8.0mm MAX
反向行程 Negative direction travel	8.6mm MAX
正向自由位置 Positive direction free position	19.0mm MAX
反向自由位置 Negative direction free position	9.5mm MAX
正向动作位置 Positive direction operating posi	12.05±1.5mm
反向动作位置 Negative direction operating posi	15.5±1.0mm