

G9A/G9B



3.5mm行程微动开关 3.5mm Travel Micro Switch

■特点/Features

- ◆G9A防水防尘(IP67)/G9B防尘(IP40)
- ◆体型小巧,结构紧凑
- ◆长寿命,高可靠性
- ◆端子类型齐全
- ◆配备各种形式操作柄
- ◆长的过行程超过2.2mm
- ◆广泛应用于各种汽车控制、家电及工业控制领域等

- G9A Dust and Water Proof (IP67)/G9B Dust Proof (IP40)
- Small Compact Size
- Long Life and High Reliability
- Variety of Terminals
- Variety of Levers Optional
- Long Overtravel of 2.20mm Minimum
- Widely used in Auto Control, Appliance and Other industry Control

■应用/Application

- ◆汽车电子/Auto Electronics
- ◆家用电器/HomeAppliance
- ◆仪器仪表/Apparatus and Instruments

■特性参数/Parameters:

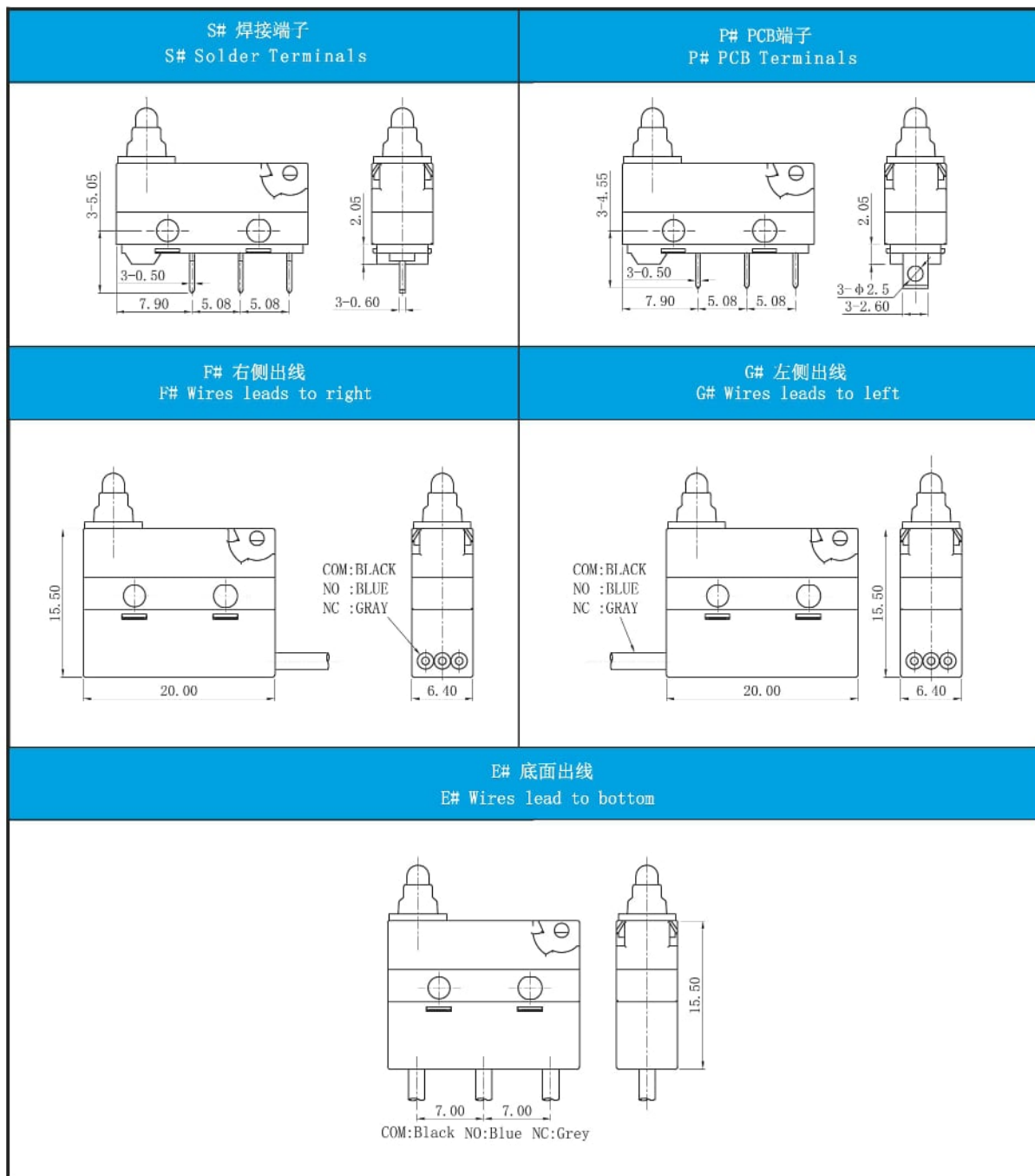
额定值/Rating	P1	0.1A 125/250VAC, 0.1A 30VDC
	05	5(2)A 125/250VAC, 5A 30VDC
操作频率 Operating Frequency	电气/Electrical	10~30 cycles/minute
	机械/Mechanical	120 cycles/minute
接触电阻(初始值) Contact Resistance (Initiative)	端子型/With terminals type	≤100mΩ
	导线型/With wire type	≤200mΩ (500mm线长)
绝缘电阻/Insulation Resistance (at500VDC)		≥100MΩ (DC500V 绝缘电阻计)
耐电压 Volatge Resistance	同极端子间 Between terminals	AC 500V, 50/60HZ, 1min
	各端子与非带电金属件之间 Between terminals and uncharged metal parts	AC 1000V, 50/60HZ, 1min
寿命/Service Life	电气/Electrical	50,000次/cycles
	机械/Mechanical	200,000次/cycles (IP67) 200,0000次/cycles (IP40)
使用环境温度/Storage Temperature		-40~+85° C
使用环境湿度/Storage Humidity		95% RH Max

G9A/G9B系列微动开关订货型号指引 G9A/G9B Series Micro Switch Ordering Instruction

G9A	05	200	S	01	A	F	300	T001	U
Switch Type 开关类别	Electrical Rating 额定负载	Max Operating Force at Pin Plunger 操作力(最大值) 是指在不带操作柄螺母	Terminal Type 端子类型	Lever Type 操作柄类型	Circuit code 接触形式	Waterproof code 防水形式	Wires length, lead length (AWG Type 20#)(线径 UL1007线号20#)	Custom code 定制代码	Logo 类型
G9A IP67 G9B IP40 Series-Micro Switch 微动开关	ENEC/QQC: 0.1A/125/250VAC 30VDC 40785 μ 5E4 UL/CUL: 0.1A/125/250VAC 30VDC	200 200gf Max	S 标准直焊端子 Solder Terminals	00 不带操作柄 No Lever 柱式按垫 Pin Plunger	A SPDT 单级双投	低电压型防水 (只适用于 带线开关)	500mm length, standard lead wires, 300mm 标准线长	T001	ZING EAR
	ENEC/QQC: 5.0A/125/250VAC 30VDC 40785 μ 5E4 UL/CUL: 5A/125/250VAC 30VDC	其他 Other	P 标准直PCB 端子 Straight PCB Terminals	01 手柄 01 01 Plunger	B SPST-NC 单级单投- 常闭	防水壳注胶 防水(只适 用于带线开 关)	300mm length, 300mm长	其他 Other	U Unionwell
	其他 Other		E Molded Lead wires downwards 带电线型号 底面出线	其他 Other	C SPST-NO 单级单投- 常开	其他 Other	其他 Other	...	其他 Other
			F Molded Lead Wires Leads to Right Side (Opposite to Pin plunger side) 带电线型号(右侧出线)						
			G Molded Lead Wires Leads to Left Side (Pin plunger side) 带电线型号(左侧出线)						
			特殊端子 Special Terminals						

■端子类型/Terminal Type

◆端子厚度为0.5mm/ Terminal thickness: 0.5mm



基本型安装尺寸及操作特性图/Mounting Hole and Operating Characteristics

安装孔尺寸/Mounting Hole Dimension	PCB端子安装孔尺寸/Mounting Hole Dimension of PCB Terminals
<p>2-ϕ2.3 mounting holes or M2.2 screw holes 9.50\pm0.15</p>	<p>3-ϕ1.35~1.5dia 2.60 9.50\pm0.15 2.55 5.08 5.08</p>

电路图/Circuit

	SPDT	SPST-NC	SPST-NO

外形尺寸和操作特性/Dimensions and Operating Characteristics

◆G9A□□-□□□S00A

		<table border="1"> <thead> <tr> <th>OF Max. (gf)</th> <th>RF Min. (gf)</th> <th>PT Max. (mm)</th> <th>OT Min. (mm)</th> <th>DT Max. (mm)</th> <th>FP Max. (mm)</th> <th>OP (mm)</th> </tr> </thead> <tbody> <tr> <td>200</td> <td>200</td> <td>20</td> <td>1.7</td> <td>2.2</td> <td>0.9</td> <td>13.0</td> </tr> </tbody> </table>	OF Max. (gf)	RF Min. (gf)	PT Max. (mm)	OT Min. (mm)	DT Max. (mm)	FP Max. (mm)	OP (mm)	200	200	20	1.7	2.2	0.9	13.0
OF Max. (gf)	RF Min. (gf)	PT Max. (mm)	OT Min. (mm)	DT Max. (mm)	FP Max. (mm)	OP (mm)										
200	200	20	1.7	2.2	0.9	13.0										

◆G9A□□-□□□S01A

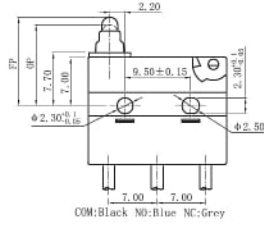
		<table border="1"> <thead> <tr> <th>OF Max. (gf)</th> <th>RF Min. (gf)</th> <th>PT Max. (mm)</th> <th>OT Min. (mm)</th> <th>DT Max. (mm)</th> <th>FP Max. (mm)</th> <th>OP (mm)</th> </tr> </thead> <tbody> <tr> <td>200</td> <td>200</td> <td>20</td> <td>2.9</td> <td>2.2</td> <td>1.0</td> <td>14.5</td> </tr> </tbody> </table>	OF Max. (gf)	RF Min. (gf)	PT Max. (mm)	OT Min. (mm)	DT Max. (mm)	FP Max. (mm)	OP (mm)	200	200	20	2.9	2.2	1.0	14.5
OF Max. (gf)	RF Min. (gf)	PT Max. (mm)	OT Min. (mm)	DT Max. (mm)	FP Max. (mm)	OP (mm)										
200	200	20	2.9	2.2	1.0	14.5										

◆G9A□□-□□□S02A

		<table border="1"> <thead> <tr> <th>OF Max. (gf)</th> <th>RF Min. (gf)</th> <th>PT Max. (mm)</th> <th>OT Min. (mm)</th> <th>DT Max. (mm)</th> <th>FP Max. (mm)</th> <th>OP (mm)</th> </tr> </thead> <tbody> <tr> <td>-200</td> <td>150</td> <td>20</td> <td>4.0</td> <td>2.9</td> <td>1.3</td> <td>16.5</td> </tr> </tbody> </table>	OF Max. (gf)	RF Min. (gf)	PT Max. (mm)	OT Min. (mm)	DT Max. (mm)	FP Max. (mm)	OP (mm)	-200	150	20	4.0	2.9	1.3	16.5
OF Max. (gf)	RF Min. (gf)	PT Max. (mm)	OT Min. (mm)	DT Max. (mm)	FP Max. (mm)	OP (mm)										
-200	150	20	4.0	2.9	1.3	16.5										

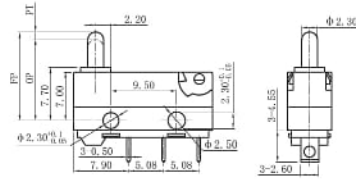
■外形尺寸和操作特性/Dimensions and Operating Characteristics

◆G9A□□-□□□E00A



OF Max. (gf)	RF Min. (gf)	PT Max. (mm)	OT Min. (mm)	DT Max. (mm)	FP Max. (mm)	OP (mm)
200	200	20	1.7	2.2	0.9	13
11.7 ± 0.4						

◆G9B□□-□□□S00A



OF Max. (gf)	RF Min. (gf)	PT Max. (mm)	OT Min. (mm)	DT Max. (mm)	FP Max. (mm)	OP (mm)
200	200	20	1.7	2.2	0.9	13.0
11.7 ± 0.4						